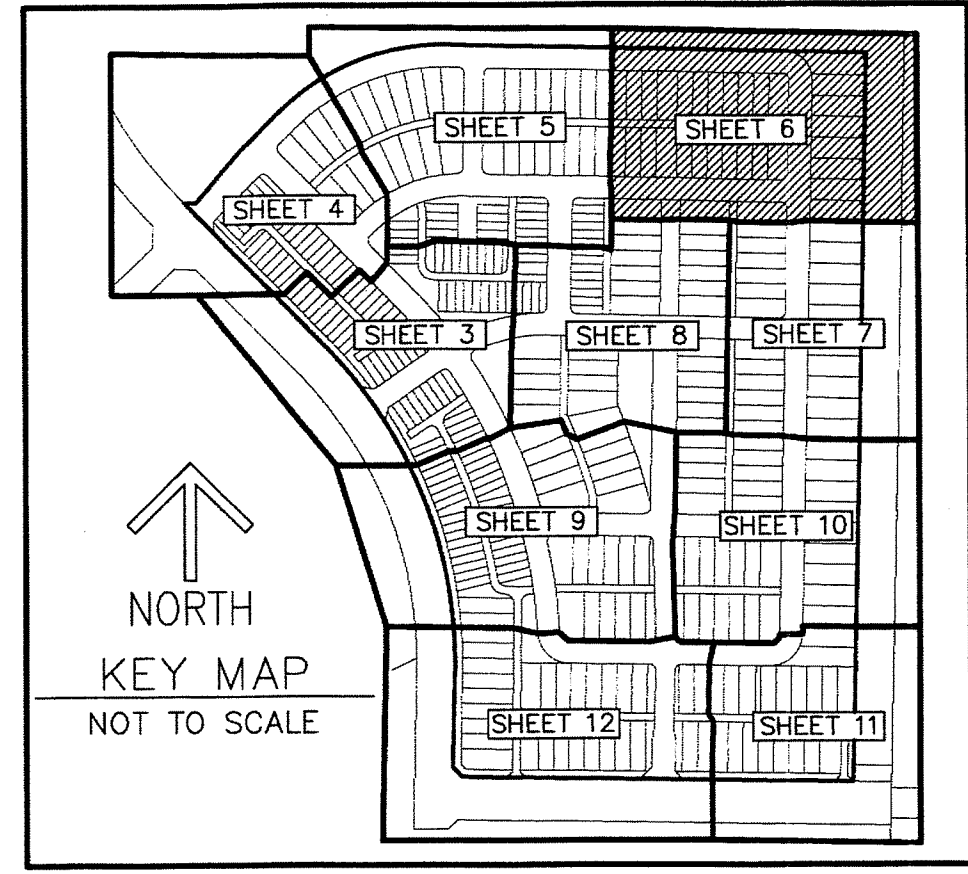


THIS INSTRUMENT PREPARED BY  
DAVID P. LINDLEY  
OF  
**CAULFIELD and WHEELER, INC.**  
SURVEYORS - ENGINEERS - PLANNERS  
7900 GLADES ROAD, SUITE 100  
BOCA RATON, FLORIDA 33434 - (561)392-1991  
NOVEMBER - 2014

# ALTON NEIGHBORHOOD 1

BEING A REPLAT OF TRACT "C-1", ALTON PCD,  
AS RECORDED IN PLAT BOOK 118, PAGES 197 THROUGH 206, OF THE PUBLIC RECORDS OF PALM BEACH COUNTY, FLORIDA,  
LYING IN SECTION 26, TOWNSHIP 41 SOUTH, RANGE 42 EAST, CITY OF PALM BEACH GARDENS, PALM BEACH COUNTY, FLORIDA

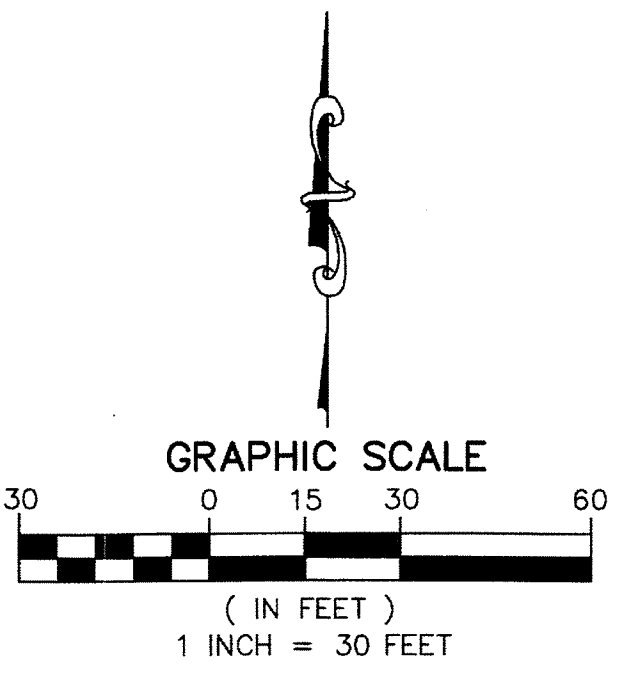


56

STATE OF FLORIDA  
COUNTY OF PALM BEACH  
THIS PLAT WAS FILED FOR  
RECORD AT \_\_\_\_\_ M.  
THIS \_\_\_\_\_ DAY OF \_\_\_\_\_  
A.D. 20\_\_\_\_ AND DULY RECORDED  
IN PLAT BOOK \_\_\_\_\_ ON  
PAGES \_\_\_\_\_ AND \_\_\_\_\_

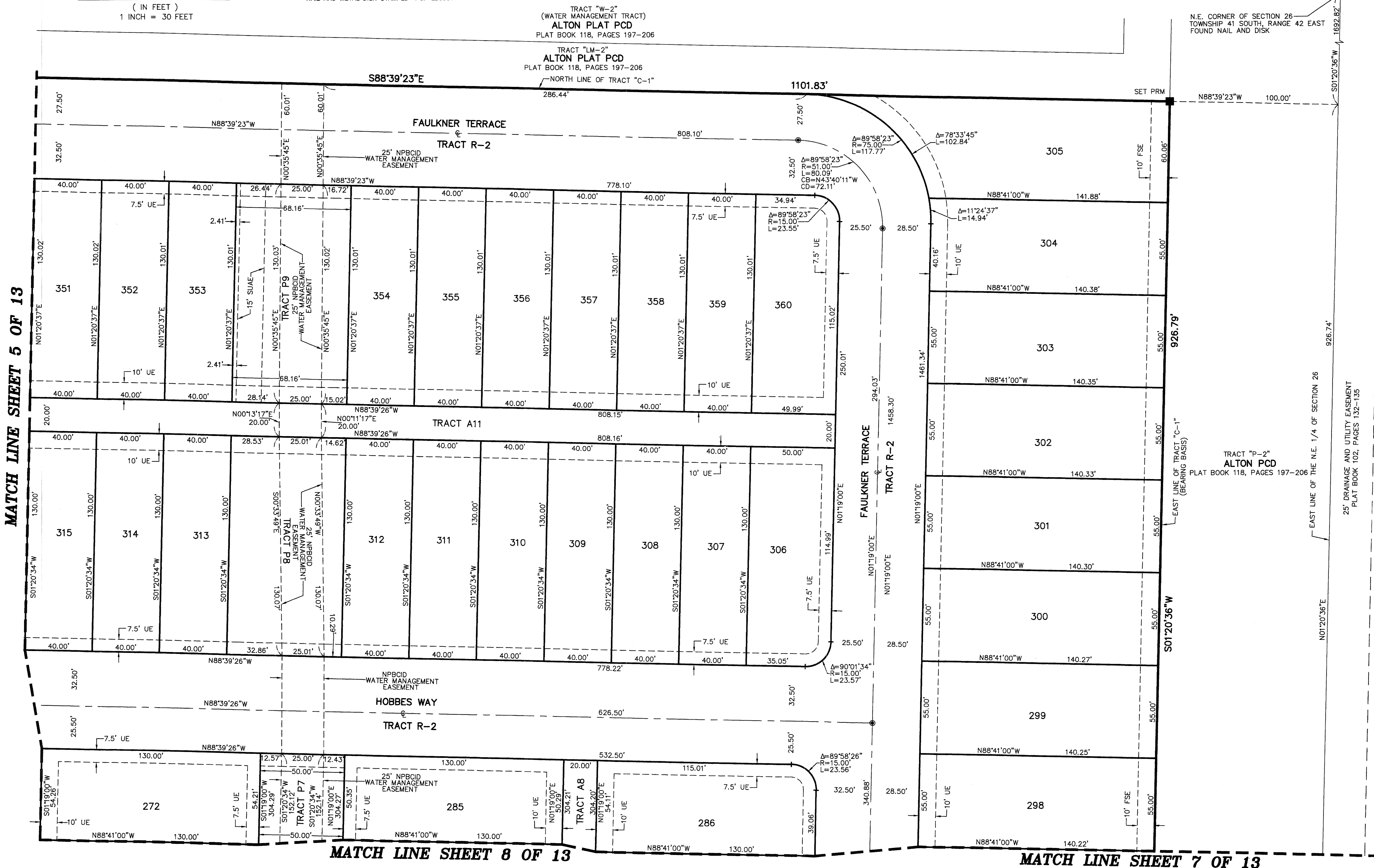
SHARON R. BOCK  
CLERK AND COMPTROLLER  
BY: \_\_\_\_\_  
DEPUTY CLERK

SHEET 6 OF 13



- LEGEND / ABBREVIATIONS**
- CL - CENTERLINE
  - CA - DELTA (CENTRAL ANGLE)
  - FSE - FIRE SAFETY EASEMENT
  - CB - CHORD BEARING
  - CD - CHORD DISTANCE
  - L - ARC LENGTH
  - LB - LICENSED BUSINESS
  - LBWE - LANDSCAPE BUFFER WALL EASEMENT
  - NPCID - NORTHERN PALM BEACH COUNTY IMPROVEMENT DISTRICT
  - O.R.B. - OFFICIAL RECORD BOOK
  - R - RADIUS
  - (RAD) - INDICATES RADIAL LINE
  - RBE - ROADWAY BUFFER EASEMENT
  - SUAE - SEACOAST UTILITY AUTHORITY EASEMENT
  - UE - UTILITY EASEMENT
  - PRM - DENOTES PERMANENT REFERENCE MONUMENT
  - 4" x 4" x 24" CONCRETE MONUMENT WITH ALUMINUM DISK STAMPED "PRM LB3591"
  - PCP - DENOTES PERMANENT CONTROL POINT NAIL AND METAL DISK STAMPED "PCP LB3591"

- SURVEY NOTES:**
1. IN THOSE CASES WHERE EASEMENTS OF DIFFERENT TYPES CROSS OR OTHERWISE COINCIDE, DRAINAGE EASEMENTS SHALL HAVE FIRST PRIORITY, UTILITY EASEMENTS SHALL HAVE SECOND PRIORITY, ACCESS EASEMENTS SHALL HAVE THIRD PRIORITY, AND ALL OTHER EASEMENTS SHALL BE SUBORDINATE TO THESE WITH THEIR PRIORITIES BEING DETERMINED BY USE RIGHTS GRANTED.
  2. BUILDING SETBACK LINES SHALL BE AS REQUIRED BY CURRENT CITY OF PALM BEACH GARDENS ZONING REGULATIONS.
  3. NO BUILDINGS OR ANY KIND OF CONSTRUCTION OR TREES OR SHRUBS SHALL BE PLACED ON AN EASEMENT WITHOUT PRIOR WRITTEN CONSENT OF ALL EASEMENT BENEFICIARIES AND ALL APPLICABLE CITY APPROVALS OR PERMITS AS REQUIRED FOR SUCH ENCROACHMENTS.
  4. BEARINGS SHOWN HEREON ARE RELATIVE TO A RECORD BEARING OF S0117°32'W ALONG THE EAST LINE OF TRACT "C-1", ALTON PCD, AS RECORDED IN PLAT BOOK 118, PAGES 197 THROUGH 206 OF THE PUBLIC RECORDS OF PALM BEACH COUNTY.
  5. LINES INTERSECTING CURVES ARE NON-RADIAL UNLESS SHOWN OTHERWISE.
  6. "NOTICE" THIS PLAT, AS RECORDED IN ITS GRAPHIC FORM, IS THE OFFICIAL DEPICTION OF THE SUBDIVIDED LANDS DESCRIBED HEREIN AND WILL IN NO CIRCUMSTANCES BE SUPPLANTED IN AUTHORITY BY ANY OTHER GRAPHIC OR DIGITAL FORM OF THE PLAT. THERE MAY BE ADDITIONAL RESTRICTIONS THAT ARE NOT RECORDED ON THIS PLAT THAT MAY BE FOUND IN THE PUBLIC RECORDS OF PALM BEACH COUNTY.
  7. ALL INSTRUMENTS SHOWN ON THE PLAT ARE RECORDED IN THE PUBLIC RECORDS OF PALM BEACH COUNTY, FLORIDA.



MATCH LINE SHEET 5 OF 13

MATCH LINE SHEET 8 OF 13

MATCH LINE SHEET 7 OF 13

N.E. CORNER OF SECTION 26  
TOWNSHIP 41 SOUTH, RANGE 42 EAST  
FOUND NAIL AND DISK

EAST LINE OF THE N.E. 1/4 OF SECTION 26

25' DRAINAGE AND UTILITY EASEMENT  
PLAT BOOK 102, PAGES 132-135

BENJAMIN SCHOOL